



DOI: <https://doi.org/10.38035/dhps.v2i3>
<https://creativecommons.org/licenses/by/4.0/>

Diseases Diagnosis using Machine Learning

Arsya Sinatria Artha¹, Andino Maselena², Aa Hubur³

¹Sekolah Tunas Mekar Indonesia, Lampung, Indonesia.

²International Open University, Gambia, andino@bahasa.iou.edu.gm

³International Open University, Gambia.

Corresponding Author: andino@bahasa.iou.edu.gm²

Abstract: Method that is use to optimize the criterion efficiency that depend on the previous experience is known as machine learning. By using the statistics theory it creates the mathematical model, and its major work is to surmise from the examples gave. To take the data straightforwardly from the information the approach uses computational methods. For recognize and identify the disease correctly a pattern is very necessary in Diagnosis recognition of disease. for creating the different models machine learning is used, this model can use for prediction of output and this output is depend on the input that is related to the data which previously used. For curing any disease it is very important to identify and detect that disease. For classify the disease classification algorithms are used. It uses are many dimensionality reduction algorithms and classification algorithms. Without externally modified the computer can learn with the help of the machine learning. For taking the best fit from the observation set the hypothesis is selected. Multi dimensional and high dimensional are used in machine learning. By using machine learning automatic and classy algorithms can build.

Keywords: Machine Learning; Disease Detection; Computer; Classification Algorithm.

INTRODUCTION

To support the medicinal choices, the ongoing advances in improvements and computing in innovation have encouraged the standard gathering and capacity of medical data. In many nations there is very necessary to store the data of a patient in a proper digital format. For taking the medical decisions that data are then gathered and analyzed. This data include predictions, signal, diagnosis, treatment, image analysis and course [1]. For perceive and distinguish the ailment accurately an example is fundamental in Diagnosis acknowledgment of malady. for making the various models machine learning is utilized, this model can use for expectation of yield and this yield is rely upon the info that is identified with the information which recently utilized. For relieving any sickness it is essential to recognize and distinguish that ailment [2]. For characterize the ailment order calculations are utilized. It uses are numerous dimensionality decrease calculations and grouping calculations. Without remotely adjusted the PC can learn with the assistance of the AI. For taking the best fit from the perception set the speculation is chosen. Multi dimensional and high dimensional are utilized

in machine learning. By utilizing machine learning programmed and tasteful calculations can manufacture.

There is lots of scope of machine learning in the field of medical. In some functions like medical imaging, medical knowledge extraction, medical decision support, overall patient management, protein-protein interaction used automatic learning’s empirical domain. The machine learning is used for detect and diagnose pneumonia, lung cancer and many other diseases.

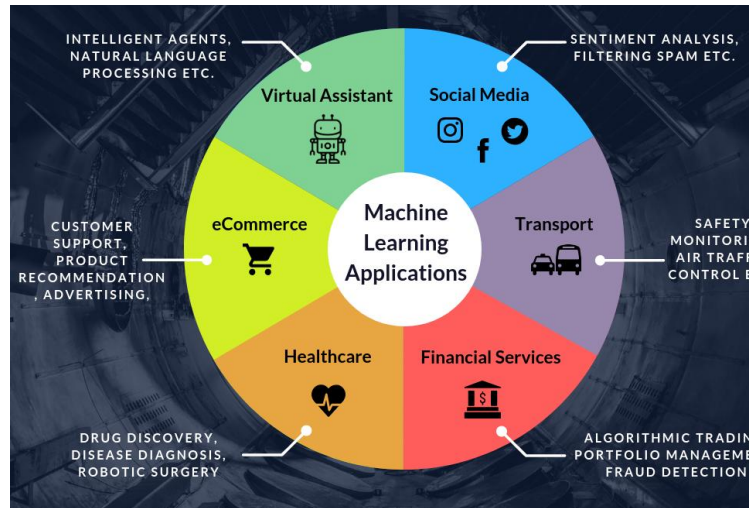


Figure 1. In various fields Machine learning applications
TYPES OF MACHINE LEARNING

The main two types of machine learning are Supervised and Unsupervised. There are some more machine learning types like Semi-Supervised, Deep learning, Evolutionary learning and Reinforcement learning are discussed below [3]:

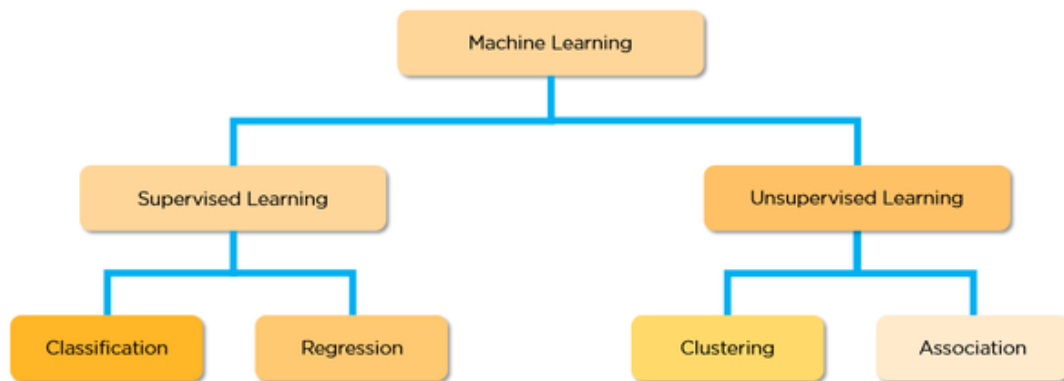


Figure 2. Types of Machine learning

METHOD

Supervised machine learning

This type of machine learning provides a training data set. As depend on training data set this machine learning method give response accurately to all inputs that are feasible. Supervised Learning is also called as Learning from examples [4]. There are two types of supervised machine learning are regression and classification.

Unsupervised machine learning

This type of machine learning finds the similarities between the data that is input. On the basis of these similarities, this technique us for data classification. This is often called as [5] estimation of density. on the basis of similarities it have clustering that make clusters.

Some other types of machine learning are:

1. Semi-supervised machine learning

This technique is considered as the class of supervised learning techniques. For training this machine learning uses unlabelled data [6]. It is the learning that exists between supervised learning and unsupervised learning. The supervised learning has labeled data and unsupervised learning has unlabelled-data.

2. Reinforcement machine learning

Behaviourist psychology supports this type of machine learning. There is using and algorithm that denote that answer is wrong but it does not tell how to correct that answer. Until find the correct answer this algorithm performs many tests [7]. In this learning improvement is not possible.

3. Evolutionary machine Learning

This type of learning shows that to make the progress how the biological organisms are adapted [8]. For checking the accuracy of the solution idea of fitness is used.

4. Deep machine learning

To optimize the result of the work this learning uses back propagation for study the model parameters [9]. With several processing layers this learning uses deep graph, this graph is made with several transformation that can be linear and nonlinear.

RESULT AND DISCUSSION

Machine Learning Algorithms for Diagnosis the Diseases

For diagnose the diseases many scientist developed many different machine learning algorithms. The researcher describes that for diagnose the different diseases the machine learning work efficiently. Different approaches used for diagnosis different diseases are shown in figure 2. There is bunches of extent of machine learning in the field of medicinal. In certain capacities like medicinal imaging, therapeutic information extraction, restorative choice help, by and large patient administration, protein-protein collaboration utilized programmed learning's observational space. The machine learning is utilized for distinguish and analyze pneumonia, lung malignant growth and numerous different ailments.

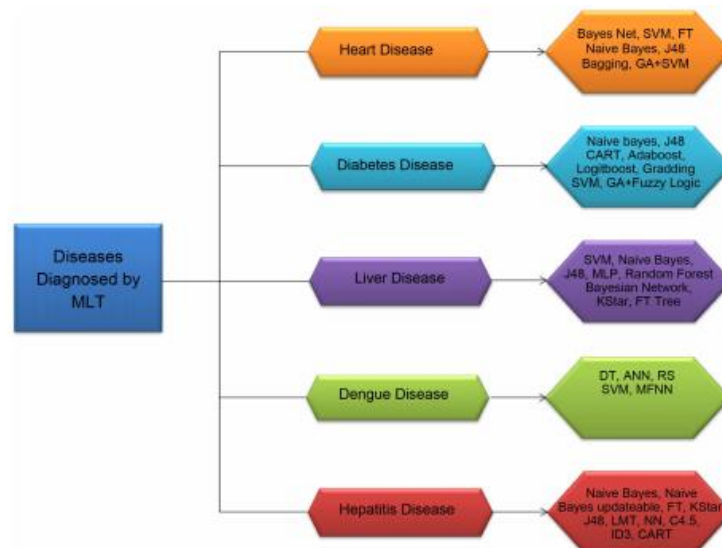


Figure 3. Types of diseases that detect by Machine learning

1. Disease related to heart

For monitoring and analysis the disease Ootom et al. [16] presented a system. This proposed system is used to monitor and detect the disease called Coronary artery disease. There is taking a data set to find the accuracy of the proposed system. For detect the disease two test are performed. There are using three algorithm Functional Trees, Support vector machine and Bayes Net.

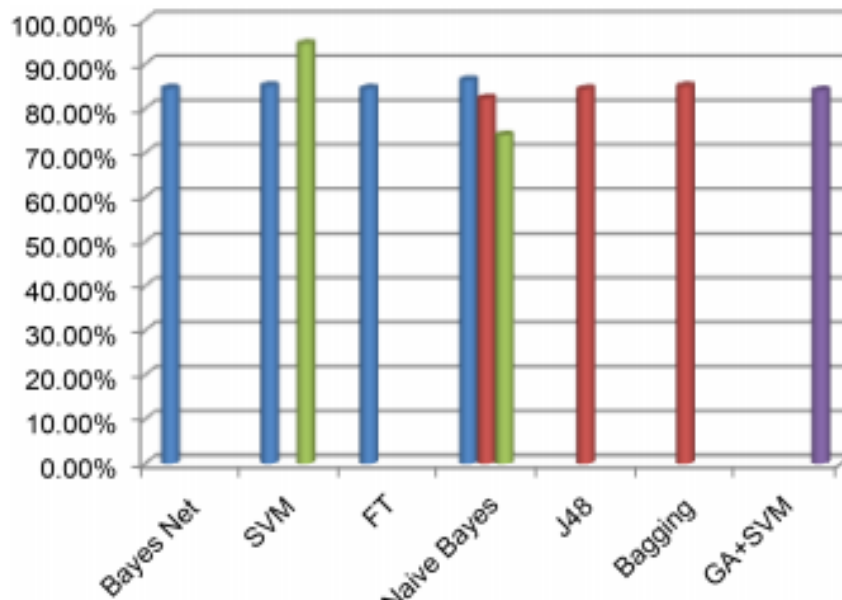


Figure 4. Detecting heart disease

2. Disease of Diabetes

By using Naive Bayes and decision tree Iyer et al. [17] introduced a model to detect the disease of diabetes. If there is insulin production in body is insufficient then this disease takes place. By using WEKA data mining tool several test were performed.

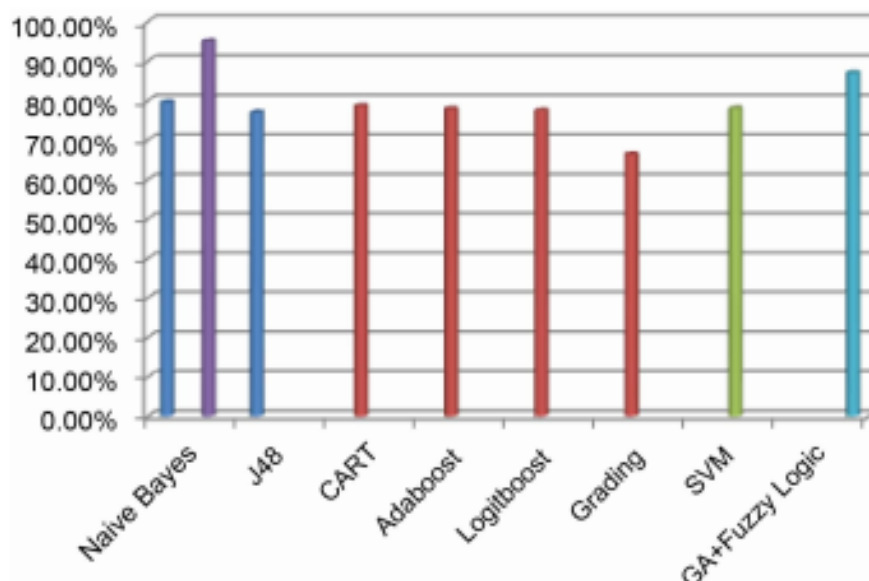


Figure 5. Detecting diabetes disease

3. Disease of Liver

By using Naive bayes Classification algorithms and Support vector machine the Vijayarani and Dhayanand [18] predict the disease related to liver. The comparison of data based on time execution and accuracy of the test.

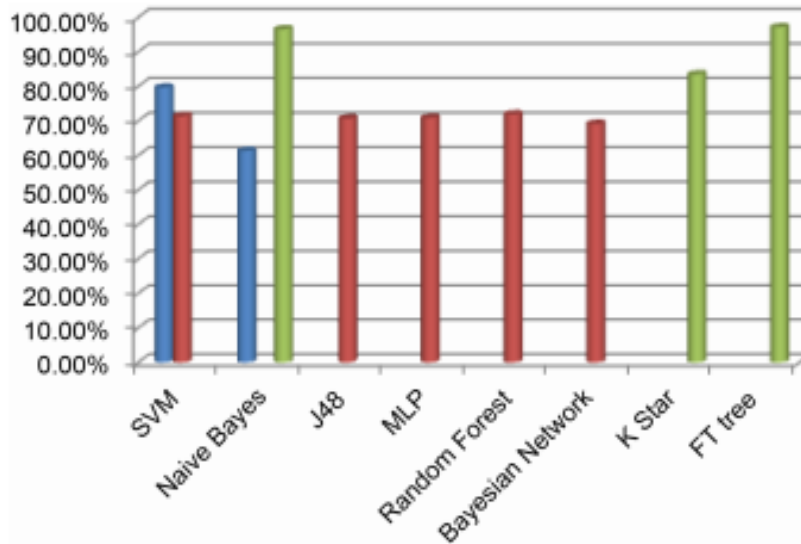


Figure 6. Detecting liver disease [15]

4. Disease of Dengue

by using the Data Mining models Tarmizi et al. [19] proposed task for Malaysia Dengue Outbreak Detection. It is a contagious disease. The counties like Malaysia, Indonesia, Thailand, India etc where weather is humid creates some problem. To predict the dengue Artificial Neural Network (ANN), Rough Set Theory (RS) and Decision Tree (DT) are used as classification algorithms.

5. Disease of Hepatitis

A comparative analysis is done by Ba-Alwi and Hintaya [20]. Naive Bayes updatable, K Star, NN, J48, LMT, Naive Bayes are the algorithms that use for diagnosis of hepatitis disease. In term of time and accuracy the measurement of classification has done. By using WEKA and neural connections the Comparative Analysis is performed. As compared with result obtain from WEKA the result of neural connections are low.

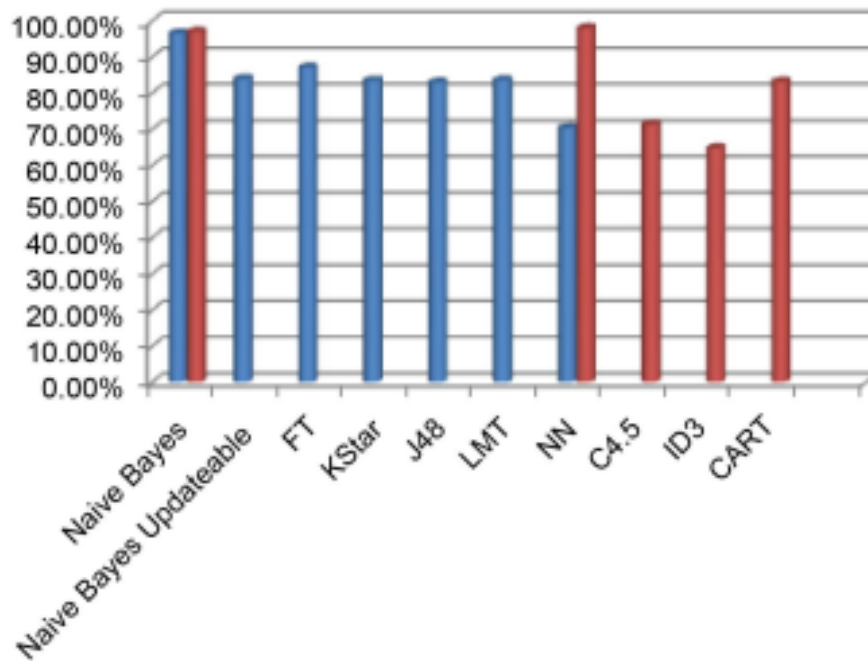


Figure 7. Detecting hepatitis disease [15]

CONCLUSION

The strategy that is used to advance the rule productivity that rely upon the past experience is known as machine learning. By utilizing the measurements hypothesis it makes the scientific model, and its real work is to derive from the models gave. To take the information direct from the data the methodology utilizes computational methods. To bolster the restorative decisions, the progressing propels in upgrades and figuring in advancement has energized the standard social affair and limit of medicinal information. In numerous countries there is extremely important to store the information of a patient in an appropriate advanced arrangement. For taking the therapeutic choices that information are then assembled and investigated. This information incorporates expectations, signal, determination, treatment, picture investigation and course. For check and separate the illness precisely a model is crucial in Diagnosis affirmation of disease.

REFERENCES

- A. Kumar, J. Kim, W. Cai, and D. Feng, 2013, "Contentbased medical image retrieval: a survey of applications to multidimensional and multimodality data," *J Digit Imaging*, vol. 26, no. 6, pp. 1025–1039.
- Adriana Albu, Loredana Stanciu, 2016, "Benefits of using artificial intelligence in medical predictions," *IEEE, EHealth and Bioengineering Conference (EHB)*.
- B. Rosario and M.A. Hearst, "Semantic Relations in Bioscience Text," *Proc. 42nd Ann. Meeting on Assoc. for Computational Linguistics*, vol. 430.
- Ba-Alwi, F.M. and Hintaya, H.M. (2013) Comparative Study for Analysis the Prognostic in Hepatitis Data: Data Mining Approach. *International Journal of Scientific & Engineering Research*, 4, 680-685.
- C. Bishop, 2006, *Pattern Recognition and Machine Learning*. Springer-Verlag New York.
- D. Yu, and L. Deng, 2011, "Deep learning and its applications to signal and information processing," *IEEE Signal Process. Mag.*, vol. 28, no. 1, pp. 145-154.
- Fatima, M. and Pasha, M. (2017) Survey of Machine Learning Algorithms for Disease Diagnostic. *Journal of Intelligent Learning Systems and Applications*, 9, 1-16.

- Iyer, A., Jeyalatha, S. and Sumbaly, R. (2015) Diagnosis of Diabetes Using Classification Mining Techniques. *International Journal of Data Mining & Knowledge Management Process (IJDKP)*, 5, 1-14. <https://doi.org/10.5121/ijdkp.2015.5101>.
- J. Ginsberg, H. Mohebbi Matthew, S.P. Rajan, B. Lynnette, S.S.Mark, and L. Brilliant, "Detecting Influenza Epidemics Using Search Engine Query Data," *Nature*, vol. 457, pp. 1012-1014, Feb.2009.
- J. Shi and J. Malik,2000, "Normalized cuts and image segmentation," *IEEE Transactions on Pattern Analysis and Machine Intelligence*, vol. 22, no. 8, pp. 888–905.
- L. Hunter and K.B.Cohen, "Biomedical Language Processing:What's beyond PubMed?" *Molecular Cell*, vol. 21-5, pp. 589-594,2006.
- M. Abedini, N. C. F. Codella, J. H. Connell, R. Garnavi, M. Merler,S. Pankanti, J. R. Smith, and T. Syeda-Mahmood, 2015, "A generalized framework for medical image classification and recognition," *IBM J Res Dev*, vol. 59, no. 2/3, pp. 1:1–1:18.
- M. Craven, "Learning to Extract Relations from Medline," *Proc.Assoc. for the Advancement of Artificial Intelligence*, 1999.
- M. Goadrich, L. Oliphant, and J. Shavlik, "Learning Ensembles of First-Order Clauses for RecallPrecision Curves: A Case Study in Biomedical Information Extraction," *Proc. 14th Int'l Conf. Inductive Logic Programming*, 2004.
- Ms.D.Pavithra, Dr.A.N.Jayanthi, "A STUDY ON MACHINE LEARNING ALGORITHM IN MEDICAL DIAGNOSIS", *International Journal of Advanced Research in Computer Science*, Volume 9, No. 4, July – August 2018.
- N. Tajbakhsh, J. Y. Shin, S. R. Gurudu, R. T. Hurst, C. B. Kendall, M. B.Gotway, and J. Liang, 2016, "Convolutional neural networks for medical image analysis: Full training or fine tuning?" *IEEE T Med Imaging*, vol. 35, no. 5, pp. 1299– 1312.
- Otoom, A.F., Abdallah, E.E., Kilani, Y., Kefaye, A. and Ashour, M. (2015) Effective Diagnosis and Monitoring of Heart Disease. *International Journal of Software Engineering and Its Applications*. 9, 143-156.
- Shaik Razia,P.Swathi Prathyusha,N.Vamsi Krishna,N.Sathya Sumana, "A REVIEW ON DISEASE DIAGNOSIS USING MACHINE LEARNING TECHNIQUES", *International Journal of Pure and Applied Mathematics*, Volume 117 No. 16 2017, 79-85.
- Tarmizi, N.D.A., Jamaluddin, F., Abu Bakar, A., Othman, Z.A., Zainudin, S. and Hamdan, A.R. (2013) Malaysia Dengue Outbreak Detection Using Data Mining Models. *Journal of Next Generation Information Technology (JNIT)*, 4, 96-107.
- Vijayarani, S. and Dhayanand, S. (2015) Liver Disease Prediction using SVM and Naïve Bayes Algorithms. *International Journal of Science, Engineering and Technology Research (IJSETR)*, 4, 816-820.